



IMS LUXEMBOURG
Inspiring More Sustainability

Luxembourg, 12 June 2023,

PRESS RELEASE

GENERAL ASSEMBLY IMS LUXEMBOURG

15 year-review of awareness-raising and action

On Thursday, 8 June, the General Assembly of IMS Luxembourg took place at Banque de Luxembourg. Julien Demoulin, Vice-President of IMS Luxembourg, introduced the session by thanking the IMS Luxembourg team and member organisations for their commitment before presenting the 2022 Activity Report. The 2022 accounts and 2023 budget were approved at the General Assembly.

“As chartered accountants, we are delighted to have been supporting the ambitious CSR project of IMS in Luxembourg for more than 2 years, whose management and teams, in addition to their multi-disciplinary expertise, have also succeeded in building a genuine culture of high management standards and maintaining their level of quality and transparency.” Emmanuel Gregoris, Deputy Director Chartered Accountant, fiduciaire des p.m.e.





IMS LUXEMBOURG
Inspiring More Sustainability

15 YEARS OF AWARENESS AND ACTION

Since 2007, IMS Luxembourg's activities have grown steadily:

- Numerous concrete projects, including the [Diversity Charter Lëtzebuerg](#), company/association collaborations [with Part&Act](#), the Zero-Single Use Plastic manifesto, three business clubs ([Luxembourg CEO Sustainability Club](#), [Sustainability Manager Club](#), [Sustainable Procurement Club](#)),...
- A growing number of members and events (see infographic on next page, data in French)
- A team that has grown from 1 to 18 people, and an internal culture developed in collaboration by all staff.
- A recognised expertise and resources that are easily accessible to everyone:
 - o **practical guides:** [Information overload in the workplace](#), [Inclusion of transgender people](#) in the workplace, [Inclusion of LGBTI people](#) in the workplace, [Transition kit](#) for finding alternatives to single-use plastic, Human rights and business (members only), EcoMobility (members only),...
 - o **practical tools:** the [Handi-Diag platform](#) to measure the place of disability in the workplace, the [Handi-Welcoming checklist](#) to assess practices, an [e-learning to explore solutions to information overload](#) in the workplace (only in French), an [E-learning on LGBTI inclusion](#) in the workplace (only in French),...
 - o **awareness-raising tools:** videos on [cycling to work](#), inspiration from best practices with the [Diversity Awards](#) and [Sustainability Awards](#) videos, ...
 - o **events to make further progress and gain perspective:** [Diversity Day](#), the [Luxembourg Sustainability Forum](#), ...

In 15 years, IMS has produced 110 practical publications, 14 editions of Sustainability Mag, 12 Luxembourg Sustainability Forums and 5 exhibitions.

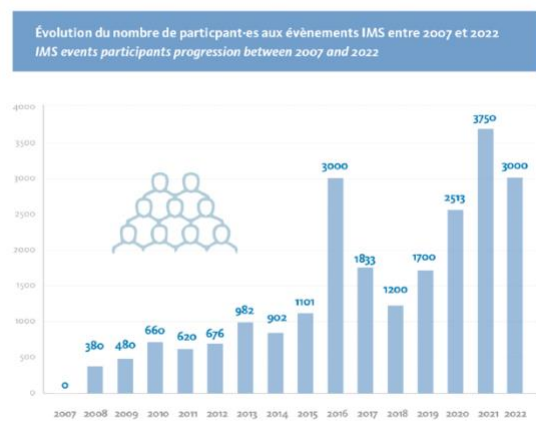
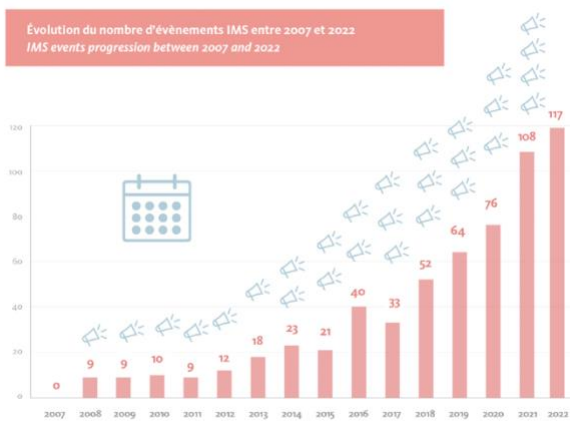
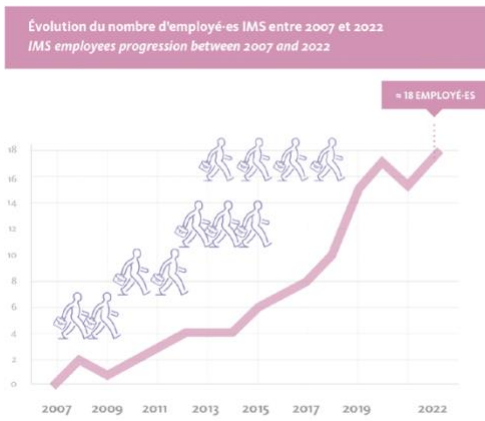


IMS LUXEMBOURG
Inspiring More Sustainability

2022, A MEMORABLE YEAR IN THE HISTORY OF IMS

In 2022, two announcements embellished the history of the association: the launch of the [Sustainability Academy](#) and the signing of an MoU - Memorandum of Understanding with B Lab, the organisation promoting the B Corp movement, making IMS the [national contact point for the international network](#). The year 2022 also celebrated 10 years of the Diversity Charter, for which IMS is the national coordinator in Luxembourg.

PRESS RFI FASE





IMS LUXEMBOURG
Inspiring More Sustainability

Chiffres-clés en 2022

PRESS RFI FASE

196 organisations membres

3 ENJEUX
People
Planet
Prosperity

251 signataires de la Charte de la Diversité Lëtzebuerg

24 CHAMPS D'ACTION

75 Membres associés (associations, ONG, fondations)



12 PUBLICATIONS

114 évènements ORGANISÉS



dont People : 55, Planet : 30, Prosperity : 25

94 %



Les participant-es recommandent à 94 % les évènements IMS

3 000

participant-es aux évènements



8,1/10*

Satisfaction globale des participant-es aux évènements

* Tous nos évènements font l'objet d'une démarche qualité, un questionnaire de satisfaction est envoyé à l'issue de chacun d'entre eux.



IMS LUXEMBOURG
Inspiring More Sustainability

Mieux connaître
l'équipe IMS*

PRESS RFI FASF

18 postes
au 31.12.2022

15 postes en 2021



8 fonctions transversales
(Direction, Communication, Administration)

6 fonctions transversales en 2021



11 CDI
7 CDD

6 CDI et 9 CDD en 2021



People

6

postes dédiés
à l'enjeu « People »

4 postes en 2021



Planet

4

postes dédiés
à l'enjeu « Planet »

5 postes en 2021

Âge moyen de l'équipe
35 ans



33 ans en 2021

17 femmes - **1** homme



14 femmes en 2021



1 homme en 2021

78 %
de l'effectif à temps complet



80 % en 2021

2 ANS
et 6 mois
d'ancienneté en moyenne



Identique en 2021

* au 31 décembre 2022



IMS LUXEMBOURG
Inspiring More Sustainability

GOVERNANCE AND BOARD OF DIRECTORS

In compliance with the Governance Charter introduced in 2022, the Board of Directors remains unchanged this year. The Board has 10 members, with 50/50 equal representation of men and women.

PRESS RELEASE



Christian Scharff
Président



Julien Demoulin
Vice-Président



Bruno Renders
Trésorier



Myriam Baltes
Secrétaire



Sasha Baillie
Membre du CA



Julie Becker
Membre du CA



Corinne Bitterlich
Membre du CA



Pascal Moisy
Membre du CA



Frédéric Vonner
Membre du CA



Karine Rollot
Membre du CA

Attached documents

Link to the 2022 Activity Report in French (soon available in English):

https://imslux.lu/assets/publication/146/Rapport_2022_BD.pdf

Link to the photo-report:

<https://www.flickr.com/photos/imsluxembourg/albums/72177720308939223/with/52960904927/>



IMS LUXEMBOURG
Inspiring More Sustainability

IMS – INSPIRING MORE SUSTAINABILITY
Luxembourg's leading network for Sustainable Development

IMS - Inspiring More Sustainability - has been the leading network of Luxembourg companies active in sustainable development for 15 years. IMS is an independent, non-political, and non-profit organisation.

IMS' mission is to inspire responsible strategies and practices among national economic actors. IMS Luxembourg supports its members through collaborative and federating projects by promoting dialogue with stakeholders (private, public, associative). IMS provides expertise, concrete solutions, awareness, and information (toolkit, training, clubs, workshops...). This network represents almost 25% of Luxembourg's payroll.

IMS is the national contact point for several european and international organisations and movements: B Corp, Capitals Coalition, CSR Europe, the European Commission - Directorate General for Justice, Mental Health Work and the WBSCD (World Business Council for Sustainable Development).

www.imslux.lu / chartediversite.lu / sustainabilitymag.lu

Follow us on [LinkedIn](#) – [Facebook](#) – [Youtube](#)

Press contact: Nadia Azarfane / nadia.azarfane@imslux.lu / Tel: +352 26 25 80 13 5

PRESS RELEASE